

RoHS Test Report No. 201401668R Date: Jan. 09, 2014 Page 1 of 12

APPLICANT : Shenzhen Aosion Photoelectricity Co., Ltd
2F, Building 3, Furong Industrial Zone, Furong 7 Road, Xinqiao,
Shajing Town, Bao'an District, Shenzhen, China

REPORT ON THE SUBMITTED SAMPLE SAID TO BE

SAMPLE NAME : Frequency conversation pest repeller

TYPE /MODEL : AN-A339

MANUFACTURER : Shenzhen Aosion Photoelectricity Co., Ltd

TEST REPORT NUMBER : 201401668R

SAMPLE RECEIVED DATE : Jan. 02, 2014

TESTING PERIOD : Jan. 02, 2014 to Jan. 09, 2014

TEST REQUESTED: TO COMBINE THE TEST RESULT FOR THE SUBMITTED SAMPLE

CONCLUSION:

<u>TESTED SAMPLES</u>	<u>STANDARD</u>	<u>RESULT</u>
SUBMITTED SAMPLE	EUROPEAN DIRECTIVE 2011/65/EU ON THE RESTRICTION OF THE USE OF CERTAIN HAZARDOUS SUBSTANCES (RoHS Directive)	PASS

*****FOR FURTHER DETAILS, PLEASE REFER TO THE FOLLOWING PAGE(S)*****

Signed for and on behalf of SHENZHEN ANBOTEK COMPLIANCE LABORATORY LIMITED

Written by Adeline Fan

Inspected by July. Zhu

Approved Jeff Zhu

Jeff Zhu / Manager



This Test Report is issued by the Company subject to its General Conditions of Service printed overleaf. Attention is drawn to the limitations of liability, indemnification and jurisdictional issues defined therein. The results shown in this report refer only to the sample(s) tested unless otherwise stated. This Test Report cannot be reproduced, except in full, without prior written permission of the Company.

Shenzhen Anbotek Compliance Laboratory Limited

Address: 1/F., Building 1, SEC Industrial Park, No.0409 Qianhai Road, Nanshan District, Shenzhen, Guangdong, China
Tel: (86) 755-26066544 Fax : (86) 755-26014772 Email: service@anbotek.com Http://www.anbotek.com.cn



RoHS Test Report

No. 201401668R

Date: Jan. 09, 2014

Page 2 of 12

Testing method:

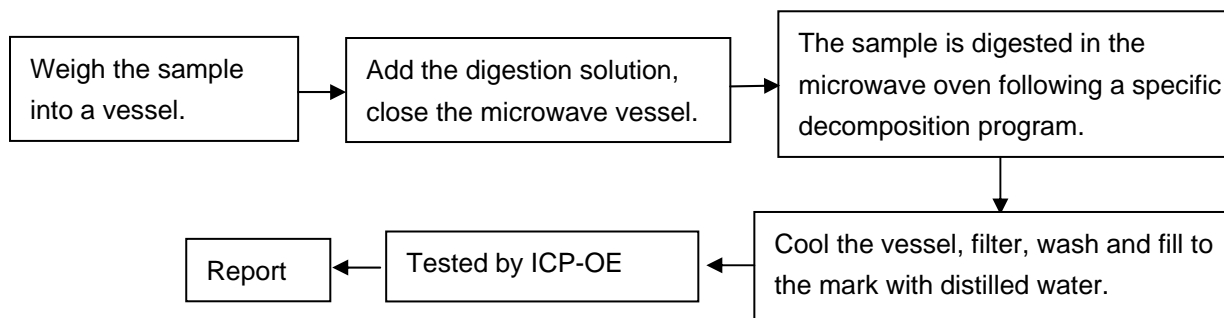
Testing Item	Measuring method	Instrument	Report Limit
Cadmium (Cd)	EN 1122B	ICP-AES	2 mg/kg
Lead (Pb)	EPA 3050B	ICP-AES	2 mg/kg
Mercury (Hg)	EPA 3052	ICP-AES	2 mg/kg
Chromium(VI) [Cr(VI)]	EPA 3060A	UV-VIS	2 mg/kg
Polybrominated Biphenyl (PBB)	83/264/EEC	GC/MS	5 mg/kg
Polybrominated Diphenylether (PBDE)	83/264/EEC	GC/MS	5 mg/kg

Method detection Limits:

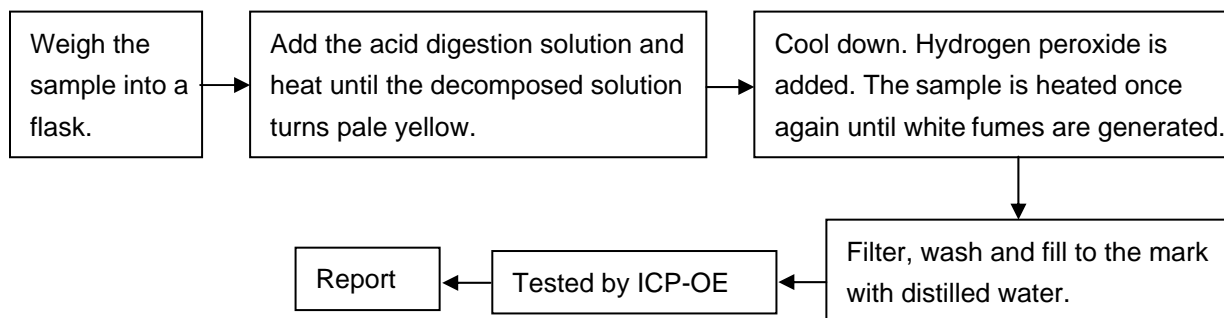
Test Item	Unit	Acceptable Limit
Cadmium (Cd)	ppm	100
Lead (Pb)	ppm	1000
Mercury (Hg)	ppm	1000
Chromium(VI) [Cr(VI)]	ppm	1000
Polybrominated Biphenyl (PBB)	ppm	1000
Polybrominated Diphenylether (PBDE)	ppm	1000

Test flow:

1. To Determine lead Content:



2. To Determine Cadmium Content:

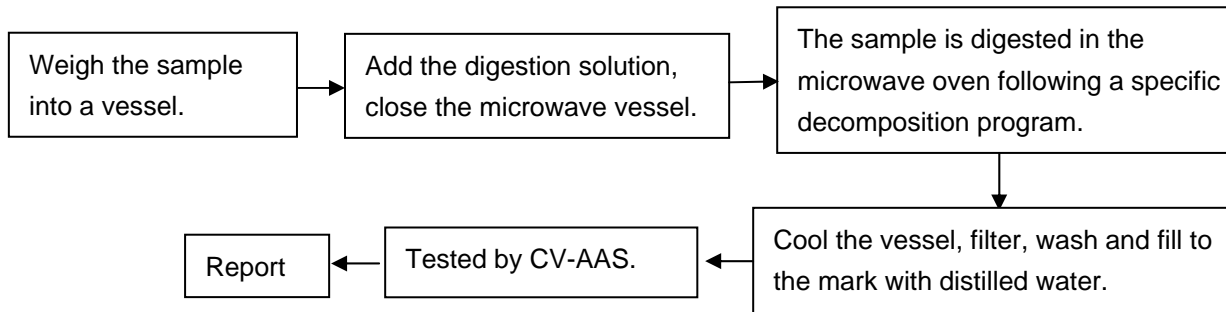


This Test Report is issued by the Company subject to its General Conditions of Service printed overleaf. Attention is drawn to the limitations of liability, indemnification and jurisdictional issues defined therein. The results shown in this report refer only to the sample(s) tested unless otherwise stated. This Test Report cannot be reproduced, except in full, without prior written permission of the company.

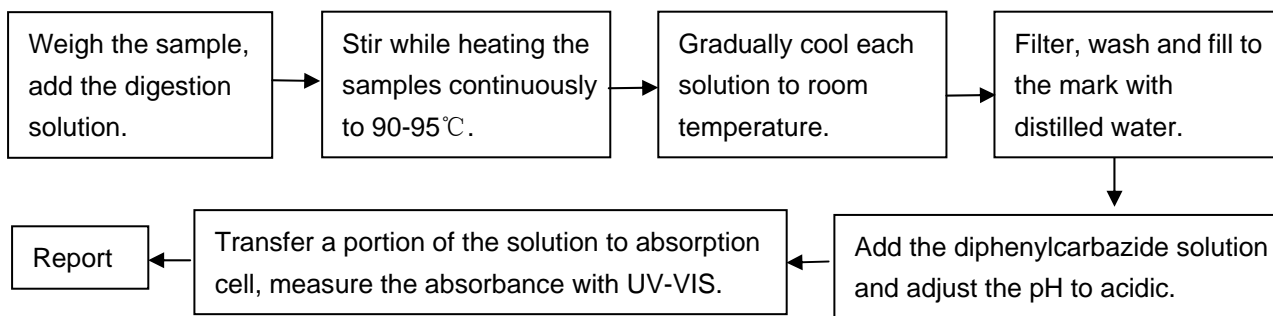
Shenzhen Anbotek Compliance Laboratory Limited

Address: 1/F., Building 1, SEC Industrial Park, No. 0409 Qianhai Road, Nanshan District, Shenzhen, Guangdong, China
 Tel: (86) 755-26066544 Fax: (86)755-26014772 Email: service@anbotek.com Http: //www.anbotek.com.cn

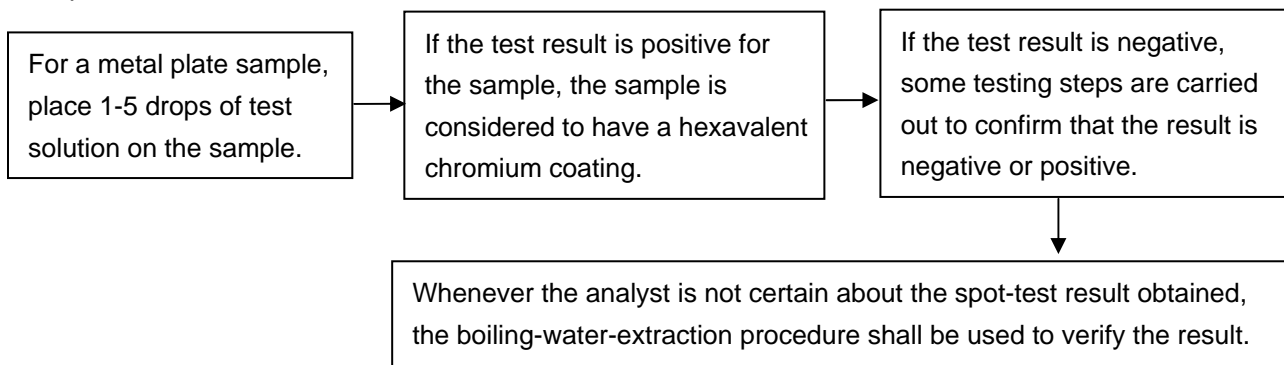
3. To Determine Mercury Content:



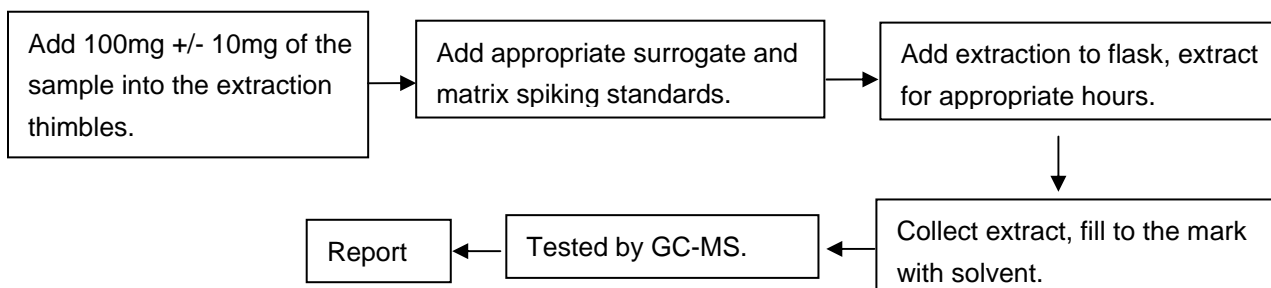
4. To Determine Hexavalent Chromium Content:



5. To Determine Hexavalent Chromium Content in metals:
spot-test:



6. To Determine PBBs / PBDEs Content:



This Test Report is issued by the Company subject to its General Conditions of Service printed overleaf. Attention is drawn to the limitations of liability, indemnification and jurisdictional issues defined therein. The results shown in this report refer only to the sample(s) tested unless otherwise stated. This Test Report cannot be reproduced, except in full, without prior written permission of the company.



RoHS Test Report

No. 201401668R

Date: Jan. 09, 2014

Page 4 of 12

Test Results

Item	Unit	MDL	<u>No.</u> 1	<u>No.</u> 2	<u>No.</u> 3-1	<u>No.</u> 3-2	<u>No.</u> 4-1
Lead Content (Pb)	ppm	2	N.D.	N.D.	N.D.	N.D.	N.D.
Cadmium Content (Cd)	ppm	2	N.D.	N.D.	N.D.	N.D.	N.D.
Mercury Content(Hg)	ppm	2	N.D.	N.D.	N.D.	N.D.	N.D.
Hexavalent Chromium Content [Cr(VI)]	ppm	2	N.D.	Negative	N.D.	Negative	N.D.
Flame Retardants							
Polybrominated biphenyls (PBBs)	ppm	5	N.D.	N.A.	N.D.	N.A.	N.D.
Polybrominated Diphenylethers(PBDEs)	ppm	5	N.D.	N.A.	N.D.	N.A.	N.D.

Item	Unit	MDL	<u>No.</u> 4-2	<u>No.</u> 5-1	<u>No.</u> 5-2	<u>No.</u> 6-1	<u>No.</u> 6-2
Lead Content (Pb)	ppm	2	N.D.	N.D.	N.D.	N.D.	N.D.
Cadmium Content (Cd)	ppm	2	N.D.	N.D.	N.D.	N.D.	N.D.
Mercury Content(Hg)	ppm	2	N.D.	N.D.	N.D.	N.D.	N.D.
Hexavalent Chromium Content [Cr(VI)]	ppm	2	Negative	N.D.	Negative	N.D.	Negative
Flame Retardants							
Polybrominated biphenyls (PBBs)	ppm	5	N.A.	N.D.	N.A.	N.D.	N.A.
Polybrominated Diphenylethers(PBDEs)	ppm	5	N.A.	N.D.	N.A.	N.D.	N.A.

Item	Unit	MDL	<u>No.</u> 7-1	<u>No.</u> 7-2	<u>No.</u> 8-1	<u>No.</u> 8-2	<u>No.</u> 9-1
Lead Content (Pb)	ppm	2	N.D.	N.D.	N.D.	N.D.	N.D.
Cadmium Content (Cd)	ppm	2	N.D.	N.D.	N.D.	N.D.	N.D.
Mercury Content(Hg)	ppm	2	N.D.	N.D.	N.D.	N.D.	N.D.
Hexavalent Chromium Content [Cr(VI)]	ppm	2	N.D.	Negative	N.D.	Negative	N.D.
Flame Retardants							
Polybrominated biphenyls (PBBs)	ppm	5	N.D.	N.A.	N.D.	N.A.	N.D.
Polybrominated Diphenylethers(PBDEs)	ppm	5	N.D.	N.A.	N.D.	N.A.	N.D.

This Test Report is issued by the Company subject to its General Conditions of Service printed overleaf. Attention is drawn to the limitations of liability, indemnification and jurisdictional issues defined therein. The results shown in this report refer only to the sample(s) tested unless otherwise stated. This Test Report cannot be reproduced, except in full, without prior written permission of the company.

Shenzhen Anbotek Compliance Laboratory Limited

Address: 1/F., Building 1, SEC Industrial Park, No. 0409 Qianhai Road, Nanshan District, Shenzhen, Guangdong, China
 Tel: (86) 755-26066544 Fax: (86)755-26014772 Email: service@anbotek.com Http: //www.anbotek.com.cn



RoHS Test Report

No. 201401668R

Date: Jan. 09, 2014

Page 5 of 12

Item	Unit	MDL	<u>No.</u> <u>9-2</u>	<u>No.</u> <u>10-1</u>	<u>No.</u> <u>10-2</u>	<u>No.</u> <u>11-1</u>	<u>No.</u> <u>11-2</u>
Lead Content (Pb)	ppm	2	N.D.	N.D.	N.D.	N.D.	N.D.
Cadmium Content (Cd)	ppm	2	N.D.	N.D.	N.D.	N.D.	N.D.
Mercury Content(Hg)	ppm	2	N.D.	N.D.	N.D.	N.D.	N.D.
Hexavalent Chromium Content [Cr(VI)]	ppm	2	Negative	N.D.	Negative	N.D.	Negative
Flame Retardants							
Polybrominated biphenyls (PBBs)	ppm	5	N.A.	N.D.	N.A.	N.D.	N.A.
Polybrominated Diphenylethers(PBDEs)	ppm	5	N.A.	N.D.	N.A.	N.D.	N.A.

Item	Unit	MDL	<u>No.</u> <u>12-1</u>	<u>No.</u> <u>12-2</u>	<u>No.</u> <u>12-3</u>	<u>No.</u> <u>12-4</u>	<u>No.</u> <u>12-5</u>
Lead Content (Pb)	ppm	2	N.D.	N.D.	N.D.	N.D.	N.D.
Cadmium Content (Cd)	ppm	2	N.D.	N.D.	N.D.	N.D.	N.D.
Mercury Content(Hg)	ppm	2	N.D.	N.D.	N.D.	N.D.	N.D.
Hexavalent Chromium Content [Cr(VI)]	ppm	2	Negative	Negative	Negative	N.D.	N.D.
Flame Retardants							
Polybrominated biphenyls (PBBs)	ppm	5	N.A.	N.A.	N.A.	N.D.	N.D.
Polybrominated Diphenylethers(PBDEs)	ppm	5	N.A.	N.A.	N.A.	N.D.	N.D.

Item	Unit	MDL	<u>No.</u> <u>12-6</u>	<u>No.</u> <u>12-7</u>	<u>No.</u> <u>12-8</u>	<u>No.</u> <u>13-1</u>	<u>No.</u> <u>13-2</u>
Lead Content (Pb)	ppm	2	N.D.	N.D.	N.D.	N.D.	N.D.
Cadmium Content (Cd)	ppm	2	N.D.	N.D.	N.D.	N.D.	N.D.
Mercury Content(Hg)	ppm	2	N.D.	N.D.	N.D.	N.D.	N.D.
Hexavalent Chromium Content [Cr(VI)]	ppm	2	N.D.	N.D.	N.D.	N.D.	Negative
Flame Retardants							
Polybrominated biphenyls (PBBs)	ppm	5	N.D.	N.D.	N.D.	N.D.	N.A.
Polybrominated Diphenylethers(PBDEs)	ppm	5	N.D.	N.D.	N.D.	N.D.	N.A.

This Test Report is issued by the Company subject to its General Conditions of Service printed overleaf. Attention is drawn to the limitations of liability, indemnification and jurisdictional issues defined therein. The results shown in this report refer only to the sample(s) tested unless otherwise stated. This Test Report cannot be reproduced, except in full, without prior written permission of the company.

Shenzhen Anbotek Compliance Laboratory Limited

Address: 1/F., Building 1, SEC Industrial Park, No. 0409 Qianhai Road, Nanshan District, Shenzhen, Guangdong, China
 Tel: (86) 755-26066544 Fax: (86)755-26014772 Email: service@anbotek.com Http: //www.anbotek.com.cn



RoHS Test Report

No. 201401668R

Date: Jan. 09, 2014

Page 6 of 12

Item	Unit	MDL	<u>No.</u> <u>14-1</u>	<u>No.</u> <u>14-2</u>	<u>No.</u> <u>14-3</u>	<u>No.</u> <u>14-4</u>	<u>No.</u> <u>14-5</u>
Lead Content (Pb)	ppm	2	N.D.	N.D.	N.D.	N.D.	N.D.
Cadmium Content (Cd)	ppm	2	N.D.	N.D.	N.D.	N.D.	N.D.
Mercury Content(Hg)	ppm	2	N.D.	N.D.	N.D.	N.D.	N.D.
Hexavalent Chromium Content [Cr(VI)]	ppm	2	N.D.	N.D.	N.D.	Negative	Negative
Flame Retardants							
Polybrominated biphenyls (PBBs)	ppm	5	N.D.	N.D.	N.D.	N.A.	N.A.
Polybrominated Diphenylethers(PBDEs)	ppm	5	N.D.	N.D.	N.D.	N.A.	N.A.

Item	Unit	MDL	<u>No.</u> <u>15</u>	<u>No.</u> <u>16-1</u>	<u>No.</u> <u>16-2</u>	<u>No.</u> <u>16-3</u>	<u>No.</u> <u>16-4</u>
Lead Content (Pb)	ppm	2	N.D.	N.D.	N.D.	N.D.	N.D.
Cadmium Content (Cd)	ppm	2	N.D.	N.D.	N.D.	N.D.	N.D.
Mercury Content(Hg)	ppm	2	N.D.	N.D.	N.D.	N.D.	N.D.
Hexavalent Chromium Content [Cr(VI)]	ppm	2	N.D.	N.D.	Negative	Negative	Negative
Flame Retardants							
Polybrominated biphenyls (PBBs)	ppm	5	N.D.	N.D.	N.A.	N.A.	N.A.
Polybrominated Diphenylethers(PBDEs)	ppm	5	N.D.	N.D.	N.A.	N.A.	N.A.

Item	Unit	MDL	<u>No.</u> <u>16-5</u>	<u>No.</u> <u>16-6</u>	<u>No.</u> <u>17-1</u>	<u>No.</u> <u>17-2</u>	<u>No.</u> <u>17-3</u>
Lead Content (Pb)	ppm	2	N.D.	N.D.	N.D.	N.D.	N.D.
Cadmium Content (Cd)	ppm	2	N.D.	N.D.	N.D.	N.D.	N.D.
Mercury Content(Hg)	ppm	2	N.D.	N.D.	N.D.	N.D.	N.D.
Hexavalent Chromium Content [Cr(VI)]	ppm	2	Negative	Negative	Negative	N.D.	Negative
Flame Retardants							
Polybrominated biphenyls (PBBs)	ppm	5	N.A.	N.A.	N.A.	N.D.	N.A.
Polybrominated Diphenylethers(PBDEs)	ppm	5	N.A.	N.A.	N.A.	N.D.	N.A.

This Test Report is issued by the Company subject to its General Conditions of Service printed overleaf. Attention is drawn to the limitations of liability, indemnification and jurisdictional issues defined therein. The results shown in this report refer only to the sample(s) tested unless otherwise stated. This Test Report cannot be reproduced, except in full, without prior written permission of the company.

Shenzhen Anbotek Compliance Laboratory Limited

Address: 1/F., Building 1, SEC Industrial Park, No. 0409 Qianhai Road, Nanshan District, Shenzhen, Guangdong, China
 Tel: (86) 755-26066544 Fax: (86)755-26014772 Email: service@anbotek.com Http: //www.anbotek.com.cn



RoHS Test Report

No. 201401668R

Date: Jan. 09, 2014

Page 7 of 12

Item	Unit	MDL	<u>No.</u> <u>17-4</u>	<u>No.</u> <u>17-5</u>	<u>No.</u> <u>17-6</u>	<u>No.</u> <u>17-7</u>	<u>No.</u> <u>18-1</u>
Lead Content (Pb)	ppm	2	N.D.	N.D.	N.D.	N.D.	N.D.
Cadmium Content (Cd)	ppm	2	N.D.	N.D.	N.D.	N.D.	N.D.
Mercury Content(Hg)	ppm	2	N.D.	N.D.	N.D.	N.D.	N.D.
Hexavalent Chromium Content [Cr(VI)]	ppm	2	N.D.	Negative	N.D.	Negative	N.D.
Flame Retardants							
Polybrominated biphenyls (PBBs)	ppm	5	N.D.	N.A.	N.D.	N.A.	N.D.
Polybrominated Diphenylethers(PBDEs)	ppm	5	N.D.	N.A.	N.D.	N.A.	N.D.

Item	Unit	MDL	<u>No.</u> <u>18-2</u>	<u>No.</u> <u>18-3</u>	<u>No.</u> <u>18-4</u>	<u>No.</u> <u>19</u>	<u>No.</u> <u>20-1</u>
Lead Content (Pb)	ppm	2	N.D.	N.D.	N.D.	N.D.	N.D.
Cadmium Content (Cd)	ppm	2	N.D.	N.D.	N.D.	N.D.	N.D.
Mercury Content(Hg)	ppm	2	N.D.	N.D.	N.D.	N.D.	N.D.
Hexavalent Chromium Content [Cr(VI)]	ppm	2	N.D.	N.D.	Negative	Negative	N.D.
Flame Retardants							
Polybrominated biphenyls (PBBs)	ppm	5	N.D.	N.D.	N.A.	N.A.	N.D.
Polybrominated Diphenylethers(PBDEs)	ppm	5	N.D.	N.D.	N.A.	N.A.	N.D.

Item	Unit	MDL	<u>No.</u> <u>20-2</u>	<u>No.</u> <u>21</u>	<u>No.</u> <u>22</u>	<u>No.</u> <u>23</u>	<u>No.</u> <u>24</u>
Lead Content (Pb)	ppm	2	N.D.	N.D.	N.D.	N.D.	N.D.
Cadmium Content (Cd)	ppm	2	N.D.	N.D.	N.D.	N.D.	N.D.
Mercury Content(Hg)	ppm	2	N.D.	N.D.	N.D.	N.D.	N.D.
Hexavalent Chromium Content [Cr(VI)]	ppm	2	Negative	N.D.	N.D.	Negative	N.D.
Flame Retardants							
Polybrominated biphenyls (PBBs)	ppm	5	N.A.	N.D.	N.D.	N.A.	N.D.
Polybrominated Diphenylethers(PBDEs)	ppm	5	N.A.	N.D.	N.D.	N.A.	N.D.

This Test Report is issued by the Company subject to its General Conditions of Service printed overleaf. Attention is drawn to the limitations of liability, indemnification and jurisdictional issues defined therein. The results shown in this report refer only to the sample(s) tested unless otherwise stated. This Test Report cannot be reproduced, except in full, without prior written permission of the company.

Shenzhen Anbotek Compliance Laboratory Limited

Address: 1/F., Building 1, SEC Industrial Park, No. 0409 Qianhai Road, Nanshan District, Shenzhen, Guangdong, China
 Tel: (86) 755-26066544 Fax: (86)755-26014772 Email: service@anbotek.com Http: //www.anbotek.com.cn



RoHS Test Report

No. 201401668R

Date: Jan. 09, 2014

Page 8 of 12

- NOTE: (1) ppm=mg/kg.
(2) N.D.= NOT DETECTED (<MDL)
(3) N.A.= NOT APPLICABLE
(4) Negative = Absence of CrVI coating

DISCLAIM: Anbotek take no responsibility for any mistakes caused by inaccurate and /or invalid information submitted by the applicant.

This Test Report is issued by the Company subject to its General Conditions of Service printed overleaf. Attention is drawn to the limitations of liability, indemnification and jurisdictional issues defined therein. The results shown in this report refer only to the sample(s) tested unless otherwise stated. This Test Report cannot be reproduced, except in full, without prior written permission of the company.

Shenzhen Anbotek Compliance Laboratory Limited

Address: 1/F., Building 1, SEC Industrial Park, No. 0409 Qianhai Road, Nanshan District, Shenzhen, Guangdong, China
Tel: (86) 755-26066544 Fax: (86)755-26014772 Email: service@anbotek.com Http: //www.anbotek.com.cn



SAMPLE APPEARANCE DESCRIPTION

Item No.	Part Name	Description
1	PCB	Green pcb (mixed)
2	TIN	Silvery metal tin
3	RESISTANCE	---
3-1	BODY	Brown body w/ polychrome ring
3-2	PIN	Silvery metal pin
4	CBB CAPACITOR	---
4-1	BODY	Dark red body
4-2	PIN	Silvery metal pin
5	AUDION	---
5-1	BODY	Black body
5-2	PIN	Silvery metal pin
6	GLASS DIODE	---
6-1	BODY	Transparent glass w/ golden material
6-2	PIN	Silvery metal pin
7	IC	---
7-1	BODY	Black body
7-2	PIN	Silvery metal pin
8	POLYESTER CAPACITOR	---
8-1	BODY	Atrovirens body
8-2	PIN	Silvery metal pin
9	DIODE	---
9-1	BODY	Black body
9-2	PIN	Silvery metal pin
10	CAPACITOR	---
10-1	BODY	Brown body
10-2	PIN	Silvery metal pin
11	THERMISTOR	---
11-1	BODY	Black body
11-2	PIN	Silvery metal pin

This Test Report is issued by the Company subject to its General Conditions of Service printed overleaf. Attention is drawn to the limitations of liability, indemnification and jurisdictional issues defined therein. The results shown in this report refer only to the sample(s) tested unless otherwise stated. This Test Report cannot be reproduced, except in full, without prior written permission of the company.

Shenzhen Anbotek Compliance Laboratory Limited

Address: 1/F., Building 1, SEC Industrial Park, No. 0409 Qianhai Road, Nanshan District, Shenzhen, Guangdong, China
Tel: (86) 755-26066544 Fax: (86)755-26014772 Email: service@anbotek.com Http: //www.anbotek.com.cn



RoHS Test Report

No. 201401668R

Date: Jan. 09, 2014

Page 10 of 12

Item No.	Part Name	Description
12	ELECTROLYTICAL CAPACITOR	---
12-1	FOIL	Gray metal
12-2	PIN	Silvery metal
12-3	ALUMINIUM	Silvery metal shell
12-4	LIQUID	Flaxen liquid
12-5	PAPER	Green paper
12-6	RUBBER	Black rubber
12-7	HEAT SHRINKABLE TUBINGS	Black plastic tube
12-8	SHELL	Brown plastic
13	RED LED	---
13-1	BODY	Red body
13-2	PIN	Silvery metal pin
14	SWITCH	---
14-1	BODY	Black plastic body
14-2	COVER	Gray plastic cover
14-3	BUTTON	White plastic button
14-4	SPRING	Silvery metal spring
14-5	SHEET METAL	Silvery sheet metal
15	PTC	Golden metal circle w/ silvery material
16	ADJUSTMENT POTENTIOMETER	---
16-1	PCB	Orange "PCB" (mixed)
16-2	BODY	Copper color metal body
16-3	SCREWBOLT	Silvery metal screwbolt
16-4	SCREW	Silvery metal screw
16-5	GASKET	Silvery metal gasket
16-6	METAL PLATE	Silvery metal plate
17	LOUDSPEAKER	---
17-1	METAL	Silvery metal
17-2	MAGNET	Black magnet
17-3	VOICE COIL	Copper metal
17-4	DUST CAP	Dust cap

This Test Report is issued by the Company subject to its General Conditions of Service printed overleaf. Attention is drawn to the limitations of liability, indemnification and jurisdictional issues defined therein. The results shown in this report refer only to the sample(s) tested unless otherwise stated. This Test Report cannot be reproduced, except in full, without prior written permission of the company.

Shenzhen Anbotek Compliance Laboratory Limited

Address: 1/F., Building 1, SEC Industrial Park, No. 0409 Qianhai Road, Nanshan District, Shenzhen, Guangdong, China
Tel: (86) 755-26066544 Fax: (86)755-26014772 Email: service@anbotek.com Http: //www.anbotek.com.cn



RoHS Test Report

No. 201401668R

Date: Jan. 09, 2014

Page 11 of 12

Item No.	Part Name	Description
17-5	FRAME	Metal frame
17-6	PAPER	Paper
17-7	NET	Black metal net
18	PVC WIRE	---
18-1	PVC JACKET	Yellow pvc jacket
18-2	PVC JACKET	Black pvc jacket
18-3	PVC JACKET	Red pvc jacket
18-4	WIRE	Copper wire
19	SCREW	Silvery metal screw
20	CONNECTOR	---
20-1	BODY	Black plastic connector
20-2	PIN	Silvery metal pin
21	SHELL	Black plastic shell
22	NET	Silver plastic net
23	SHEET METAL	Silvery sheet metal
24	PAPER	Silver paper w/ black printing

***** End of Report *****

This Test Report is issued by the Company subject to its General Conditions of Service printed overleaf. Attention is drawn to the limitations of liability, indemnification and jurisdictional issues defined therein. The results shown in this report refer only to the sample(s) tested unless otherwise stated. This Test Report cannot be reproduced, except in full, without prior written permission of the company.

Shenzhen Anbotek Compliance Laboratory Limited

Address: 1/F., Building 1, SEC Industrial Park, No. 0409 Qianhai Road, Nanshan District, Shenzhen, Guangdong, China
Tel: (86) 755-26066544 Fax: (86)755-26014772 Email: service@anbotek.com Http: //www.anbotek.com.cn

APPENDIX A

Photograph of Sample



This Test Report is issued by the Company subject to its General Conditions of Service printed overleaf. Attention is drawn to the limitations of liability, indemnification and jurisdictional issues defined therein. The results shown in this report refer only to the sample(s) tested unless otherwise stated. This Test Report cannot be reproduced, except in full, without prior written permission of the company.

Shenzhen Anbotek Compliance Laboratory Limited

Address: 1/F., Building 1, SEC Industrial Park, No. 0409 Qianhai Road, Nanshan District, Shenzhen, Guangdong, China
Tel: (86) 755-26066544 Fax: (86)755-26014772 Email: service@anbotek.com Http: //www.anbotek.com.cn